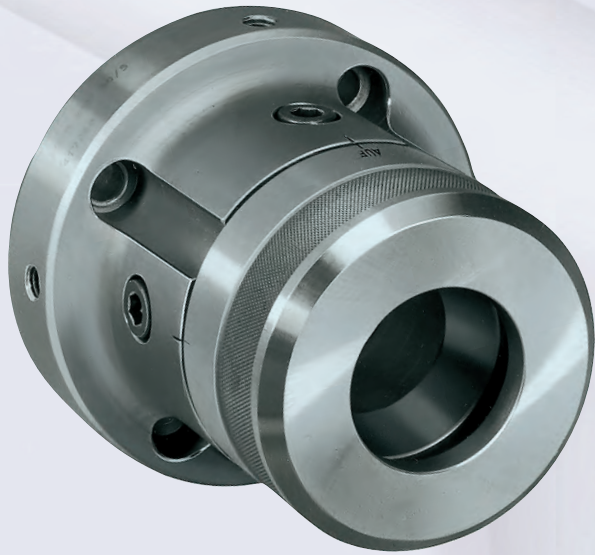


KZF - cap nut with locking screw



1. Body

2. Clamping sleeve for steel and segment collets.
For twinclamping with segment collets a suitable clamping sleeve is available.

3. Bayonet catch

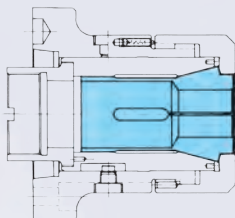
4. Locking screw

- Adapter must be ordered separately.
To fit the draw-tube and glued in the pressure sleeve
- Special accessory, not included in the scope of delivery. Workpiece locator, can only be used in conjunction with segment collets

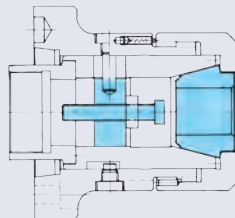
Order separately: Socket head cap screws or studs with locknut to DIN 55027

Technical features:

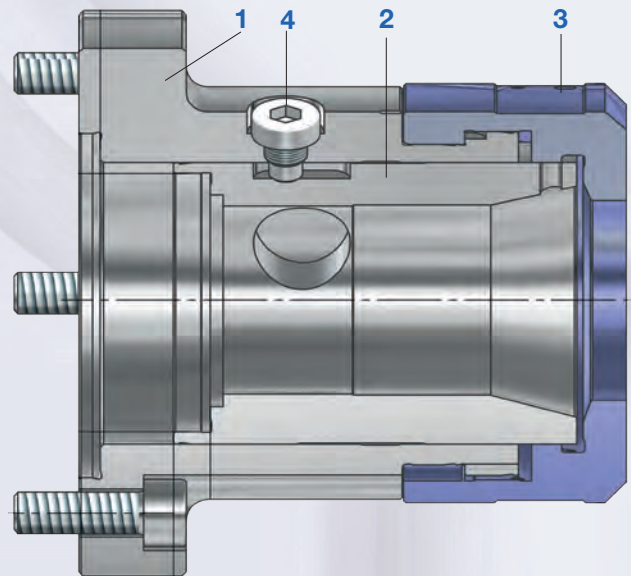
- Rapid action bayonet catch helps save time when changing collets
- Equipped either with DIN 6343 dead length collets or with segment collets
- Adjustable workpiece stop mountable when using segment collets
- All moving parts are made of high quality material, hardened and ground
- Ideally suited for the machining of bars
- Profiles can also be chucked with the appropriate collets
- Used in conjunction with RÖHM actuating cylinders with safety device SZS, OVS, LHS-L, LVS, EHS and EVS the power chucks KZF meet the requirements of the German Employers' Insurance Association



Hollow-center clamping with steel collet to DIN 6343



Clamping with collet and longitudinal workstop



Press:
Press chuck cover with its entire surface 2 mm against machine spindle



Rotate:
Rotate chuck cover at 45° till the mark "Auf" (open) coincides with the mark on the chuck



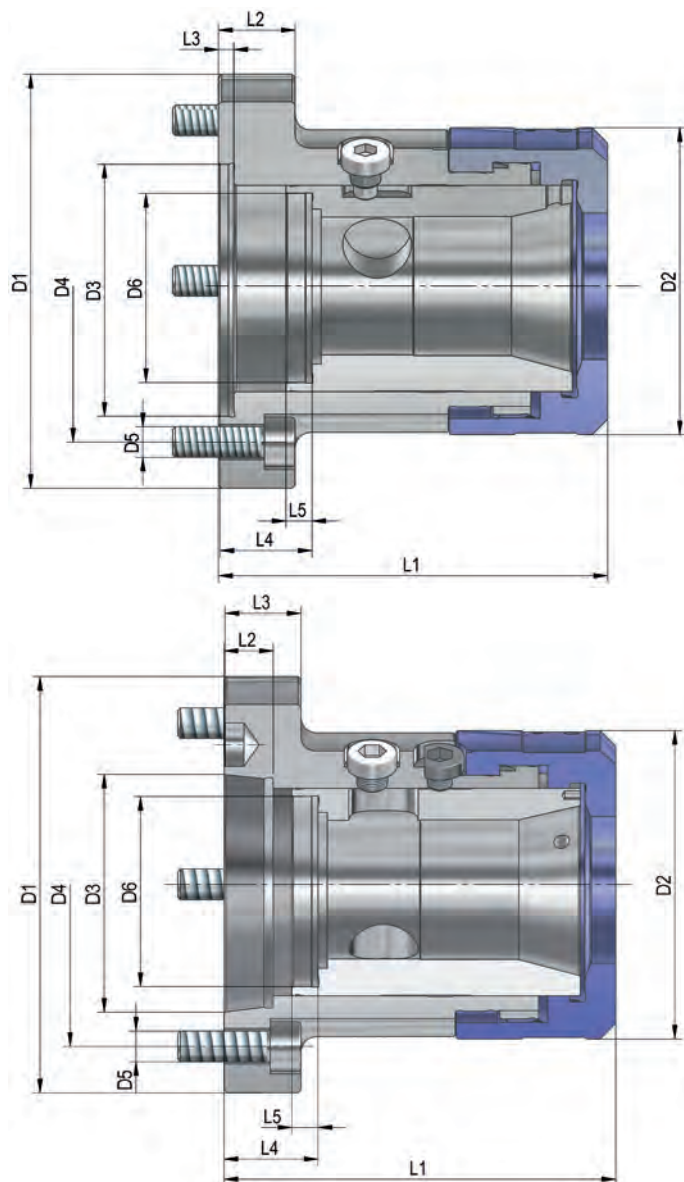
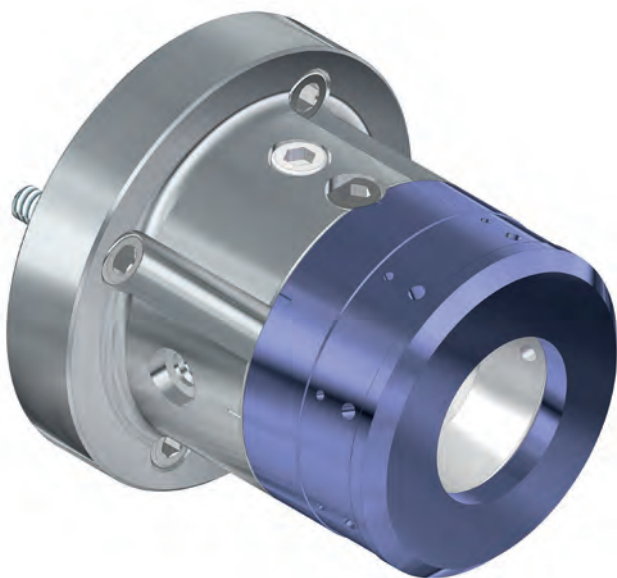
Remove:
Remove chuck cover
Remove collet



Change:
Insert new collet Lock cover analog to the description above



Bayonet-System:
The chuck cover can be placed on the chuck at any 90 degree



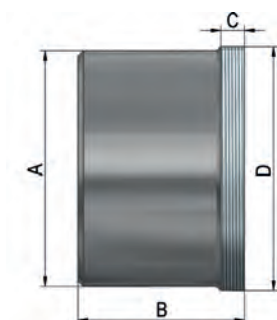
Tool group C 15
Type 508-11/508-31
power-operated collet chuck KZF,
with **quick-acting bayonet catch,**
without collet
cylindrical centre mount/ short
taper mount
draw tube-connector available on
request

Item no.	439989	439990	439991	439992	439993	439994	439995	439996	439997	439998
Size	40	40	40	40	60	60	60	60	80	80
Mount	Z-140	Z-88	KK 5	KK 6	Z-115	Z-170	KK 6	KK 8	Z-130	KK 8
D1	160	135	170	170	157	190	210	210	187	210
D2	100	100	100	100	122	122	122	122	150	150
D3	140	88	82,563	106,375	115	170	106,375	139,719	130	139,719
D4	104,8	115	104,8	133,4	136	133,4	133,4	171,4	166	171,4
D5	4xM10	6xM8	4xM10	4xM12	8xM8	6xM12	4xM12	4xM16	8xM8	4xM16
D6	M66x1,5	M66x1,5	M66x1,5	M66x1,5	M88x1,5	M88x1,5	M88x1,5	M88x1,5	M88x1,5	M114x1,5
L1	116	116	127	128	132	132	144	146	156	170
L2	25	25	25	25	25	25	25	25	30	30
L3	5	5	16	18	5	5	18	22	5	22
L4 min.	16	16	32	33	16	16	33	35	17	36
L4 max.	8,5	8,5	24,5	25,5	8,5	8,5	25,5	27,5	9,5	28,5
L5	8,5	8,5	8,5	8,5	8,5	8,5	8,5	8,5	12,5	12,5
Total stroke mm	7,5	7,5	7,5	7,5	7,5	7,5	7,5	7,5	7,5	7,5
Maximum draw bar pull kN	25	25	25	25	30	30	30	30	35	35
Total clamping force kN	50	50	50	50	60	60	60	60	70	70
Adm. speed min ⁻¹	8000	8000	8000	8000	5000	5000	5000	5000	4000	4000
Chucking capacity mm	2-42	2-42	2-42	2-42	4-60	4-60	4-60	4-60	20-80	20-80
Moment of inertia J kgm ²	0,029	0,029	0,029	0,029	0,038	0,038	0,038	0,038	0,108	0,108
Weight without collet kg	7,1	5,3	7,5	7,5	9,2	9,2	10,2	14	17,5	18

Accessories KZF

Tool group C 15

Type 508-00 **Connecting piece** for collet chuck KZF



Item no.	Size	A	B	C	D
683648 ●	40	62	60	8,5	M66x1,5
683649 ●	60	85	60	8,5	M88x1,5
683652 ●	80	100	60	12,5	M114x1,5

Matching cylinders



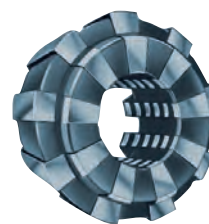
SZS



LHS-L

Größe			KZF	40/Z 140	40/Z 88	60/Z 115	60/Z 170	80/Z 130	40/5	40/6	60/6	60/8	80/8
SZS	hydraulisch	Typ	559-10	46/103	46/103	67/150	67/150	86/200	46/103	46/103	67/150	67/150	86/200
LHS-L	pneumatisch	Typ	565-10	42/289	42/289	62/438	62/438	-	42/289	42/289	62/438	62/438	-

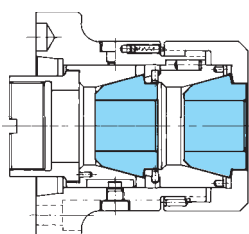
Matching collets



Chuck size	Collets DIN 6343					
	Type		Clamping capacity			Tolerance
KZF 40	8206-E	DIN 6343	2-42	6-36	6-29	+0,2 -0,3
KZF 60	2-42	6-36	6-29	+0,2	7-42	+0,2 -0,3
KZF 80	7037-E	DIN 6343 193 E	20-80	18-69	15-56	+0,2 -0,3

Chuck size	Segment-collets DIN 6343		
	Type	Clamping capacity	Tolerance
KZF 40	Series R 36	8-42	2±0,3
KZF 60	Series R 52	19-61	2±0,3
KZF 80	-	-	-

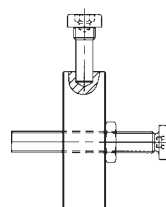
Clamping sleeves for double collets for KZF



The clamping sleeves for double collets apply to any of the normal Roehm KZF collet chucks.

Advantage: the twin clamping of bars results in a secure and vibrationfree gripping contact. Available for sizes 40 and 60 only.

Workstop for KZF



The use of a workstop in the KZF is possible, if a segment collet is inserted.